

Oxford Read and Imagine

Level 1

Lecture 14

The Treehouse

New Vision Education Center & Education for Myanmar (edu4mm.com)

- Nut: a particular kind of dry fruit that has a single seed, a hard shell, and a protective husk.



Acorn

ဝက်သစ်ချသီး



Chestnut

သစ်အယ်သီး



Hazelnut



Pecan



Walnut

သစ်ကြားသီး

- Peanuts and almonds do not meet the botanical definition of a true nut.

Almond မက်မွန်၊ မက်မန်းပင်မျိုးဝင် အပင်တစ်မျိုး/
ယင်းအပင်မှသီးသော ဗာဒံနှင့် အရသာ ဆင်သော အသီး။



Dry Fruit Of English Walnut (*Juglans regia*)

Ripe fruit with green outer pericarp enclosing seed-bearing endocarp.

In pecans (*Carya*), the outer pericarp splits into four sections. Fruit is technically called a "Tryma."

The hard inner shell (endocarp) is similar to dry drupes; however, the outer pericarp contains involucre bract tissue not found in true dry drupes. Hence, it is technically called a "Pseudodrupe."

Endocarp (shell) encloses one seed.

Husk: Outer layer of pericarp.

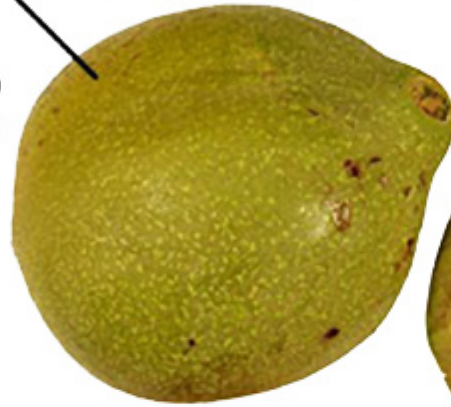
Hard inner layer of pericarp.

endocarp

© W.P. Armstrong 2019

Papery layer around seed is the seed coat.

2 cotyledons (halves) of seed.



Beetle: an insect with a hard shell-like back.
an insect of an order distinguished by forewings typically modified into hard wing cases (elytra) that cover and protect the hind wings and abdomen.



European rhinoceros beetle
(*Oryctes nasicornis*)



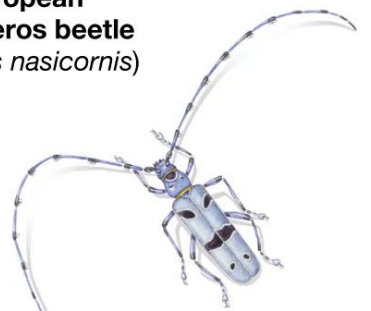
clover seed weevil
(*Apion apricans*)



great silver water beetle
(*Hydrophilus piceus*)
male



violet ground beetle
(*Carabus violaceus*)



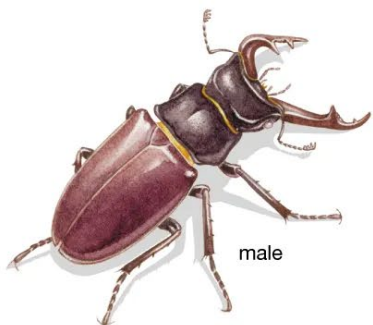
longhorn beetle
(*Rosalia alpina*)



green tiger beetle
(*Cicindela campestris*)



seven-spotted ladybug
(*Coccinella septempunctata*)



stag beetle
(*Lucanus cervus*)



click beetle
(*Ampedus sanguineus*)



deathwatch beetle
(*Xestobium rufovillosum*)



glowworm
(*Lampyris noctiluca*)